



DSS and DCF report to the
Behavioral Health Partnership
Oversight Council

July 9, 2008

CT BHP Rates

BHP Rate Increases (SFY08)

- All rates loaded May 2008 except:
 - Physician and other practitioner
 - Home-based services
 - New ECCs
- Retroactive mass adjustment - June 21st
- UPL (upper payment limit) calculation is in progress; not yet submitted to CMS
- May require modifier to establish level of performing clinician

Pay for Performance Program

Child/Adolescent Inpatient Services

- Multiple meetings of the task force (all 8 hospitals have been represented)
- Developed performance measure
- Consensus on final methodology
- Data risk adjusted
 - DCF child
 - Non-DCF child
 - DCF adolescent
 - Non-DCF adolescent

Pay for Performance Program

Child/Adolescent Inpatient Services

- Program rewards providers for meeting length of stay targets and/or for progress towards improving performance
- Performance can be improved by reducing delay LOS, acute LOS or both
- Measurement period Q 3 and Q 4 2008
- Total award: approx \$435,000

HUSKY/Charter Oak

(Corrections to June 12th presentation)

Charter Oak Behavioral Health

- Program will not meet requirements of MH parity for SA and home health MH
- Implementation requirements have been established
- Program will begin operation on August 1

Charter Oak – MH Coverage

Provider Type	Service type	Member	Limitations
		Requirement	
Hospital Inpatient	Inpatient	10% co-insurance	Auth
Hospital Outpatient	PHP, IOP, Routine	\$35 copay	Auth/Reg
Freestanding MH clinic	PHP, Day tx, IOP, Routine	\$35 copay	Auth/Reg
Independent Practitioners	MD, PhD, APRN, LMLC	\$35/\$25 copay	Auth/Reg
Home health	Medication administration	None	30 visits

Note: No out of pocket maximum for co-payments; co-insurance maximum varies by eligibility category

Charter Oak – SA Coverage

Provider Type	Service type	Member	Limitations
		Requirement	
Hospital Inpt/Res Detox	Inpatient	10% co-ins	Auth
Hospital Outpatient	PHP, IOP, Routine	\$35 copay	Auth/Reg
Alcohol and Drug Center	Ambulatory Detox	\$35 copay	Auth/Reg
Freestanding SA clinic	PHP, IOP, Day, Routine	\$35 copay	Auth/Reg
Independent Practitioners	MD, PhD, APRN, LMLC	\$35/\$25 copay	Auth/Reg

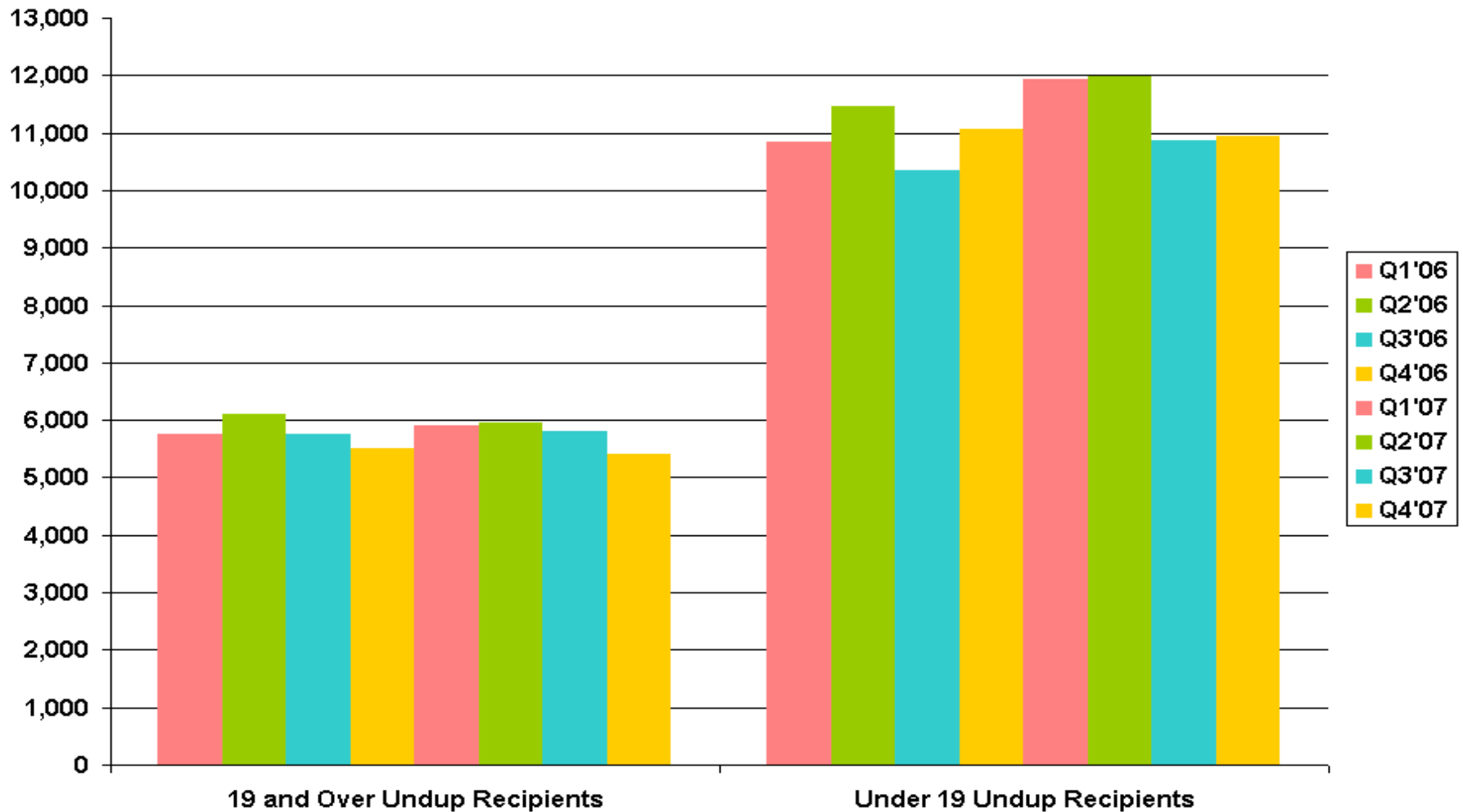
Note 1: No out of pocket max for copays; co-ins max varies by eligibility category

Note 2: Hosp Inpt/Res detox: 20 day limit drug; 15 day limit alcohol

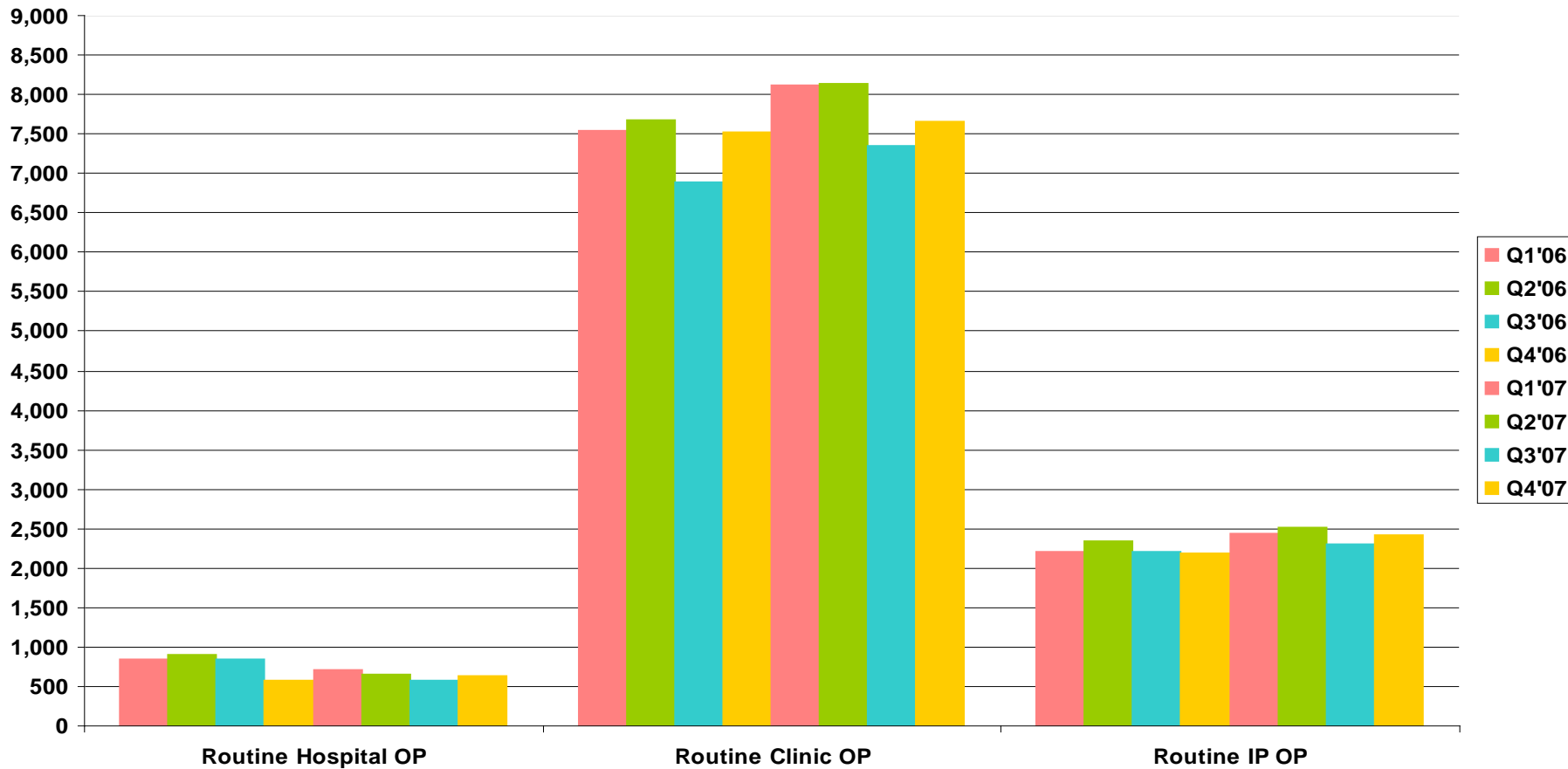
Note 3: Ambulatory services: 30 visit limit

Penetration Rates

Penetration Rate - How many people used community based services?

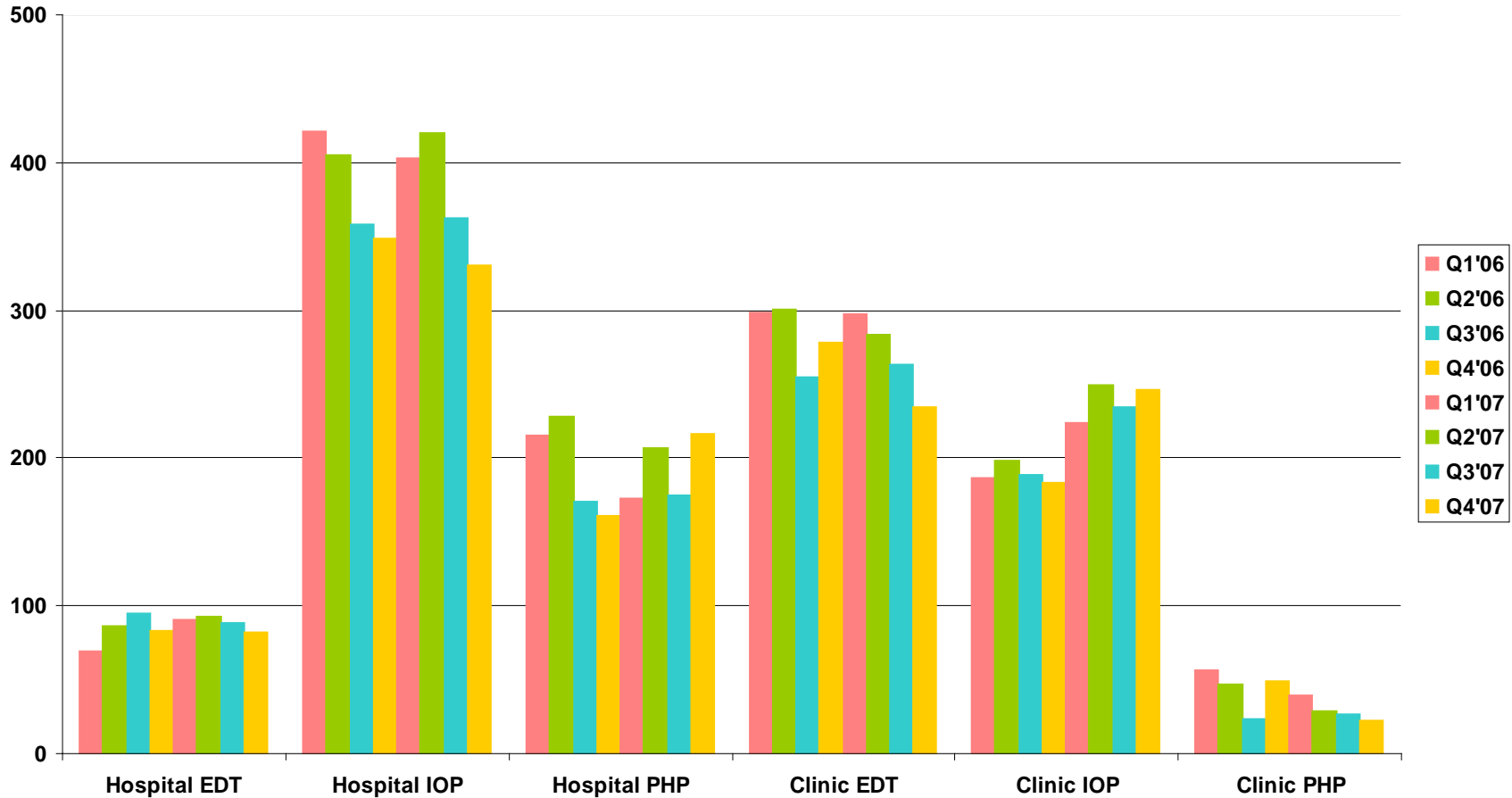


How many children used outpatient services?



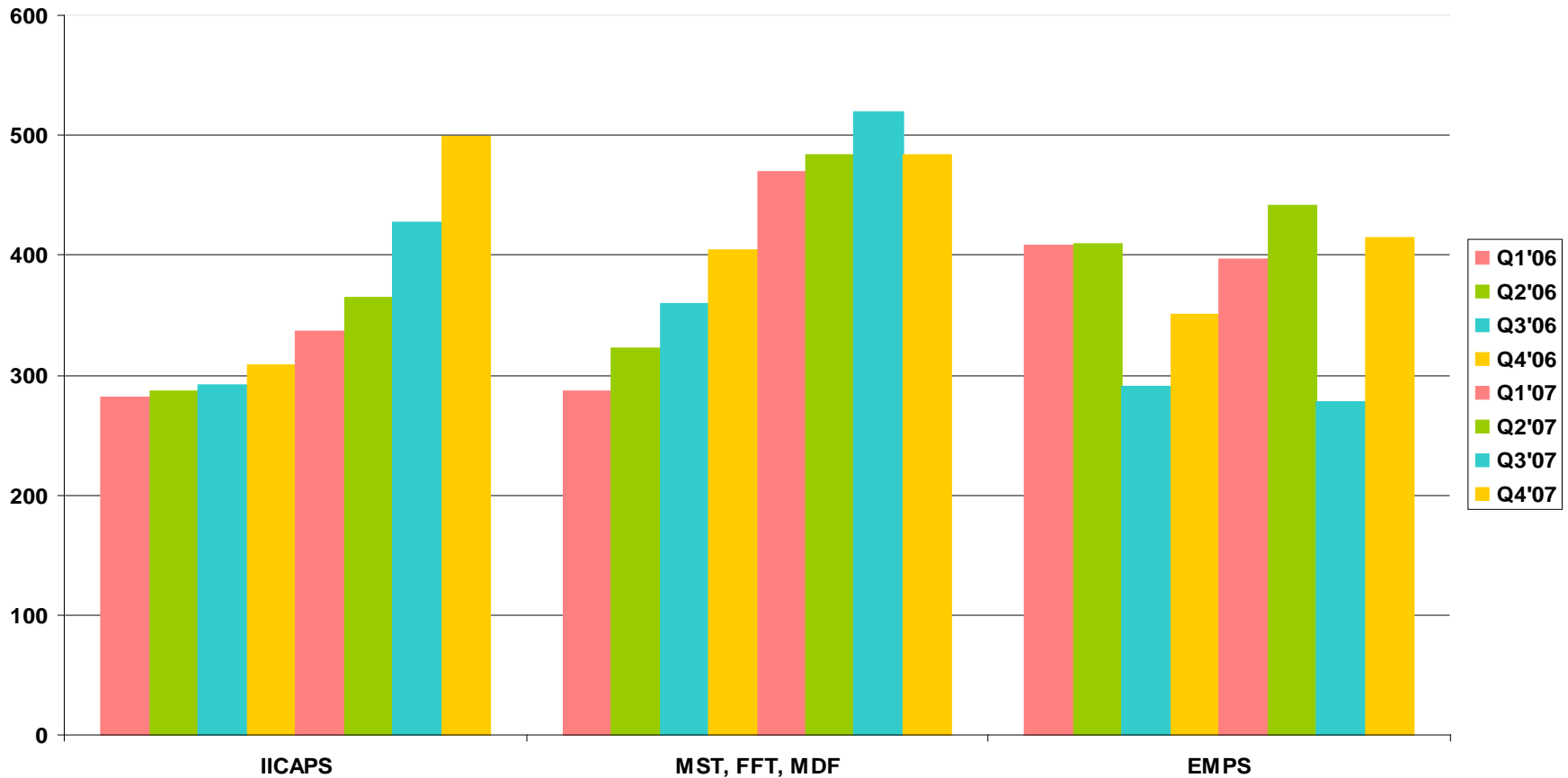
Claims

How many children used intermediate services?



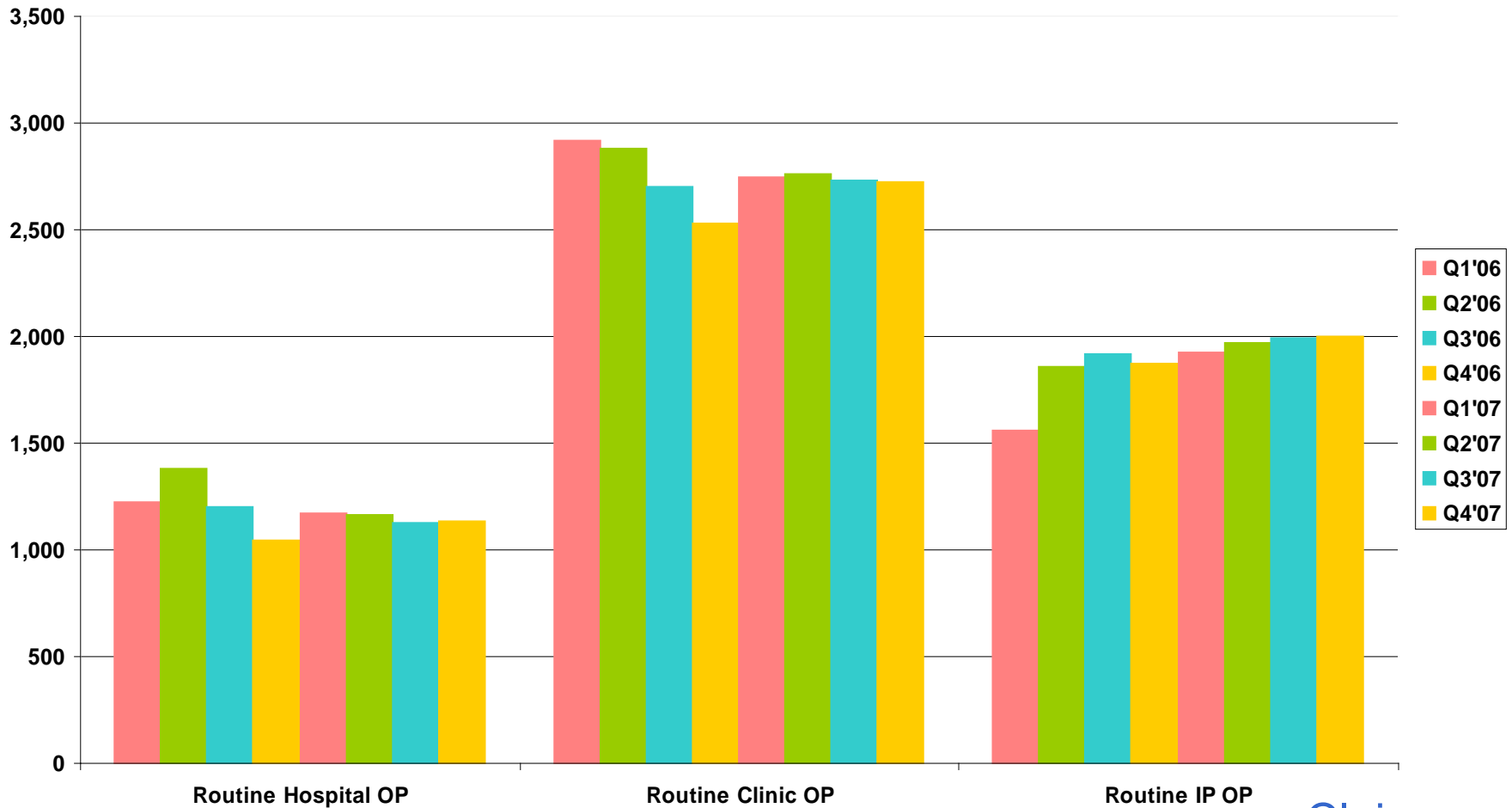
Claims

How many children used home-based services?



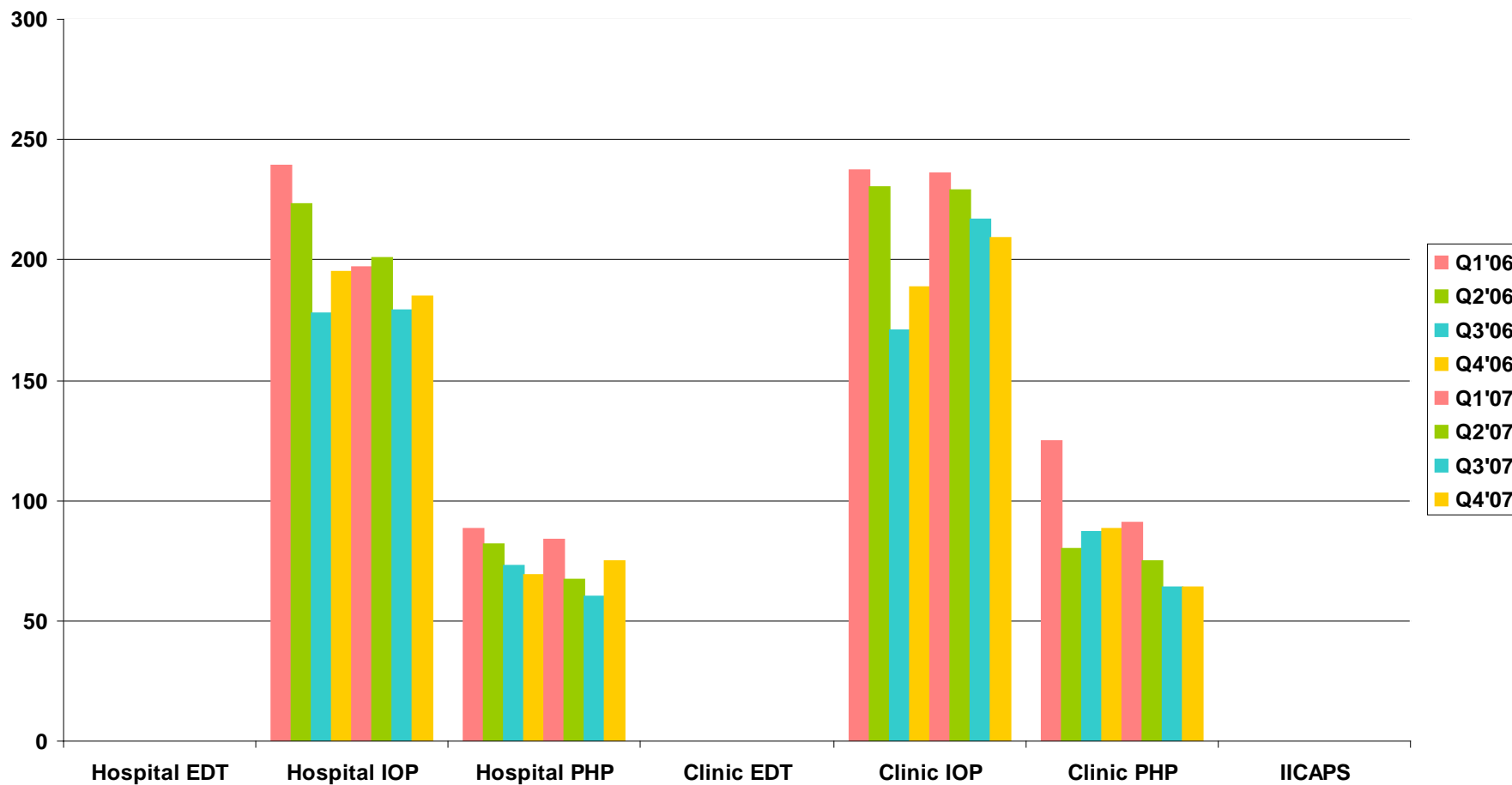
Claims

How many adults used outpatient services?



Claims

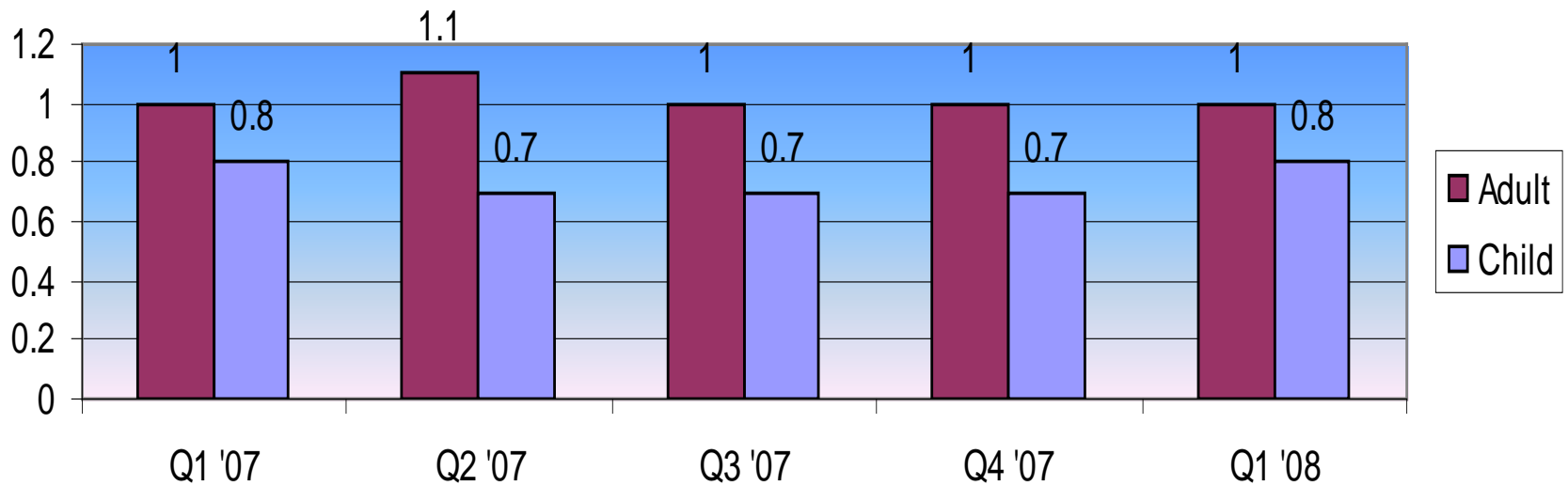
How many adults used intermediate care services?



Claims

Use of Inpatient Hospital Services

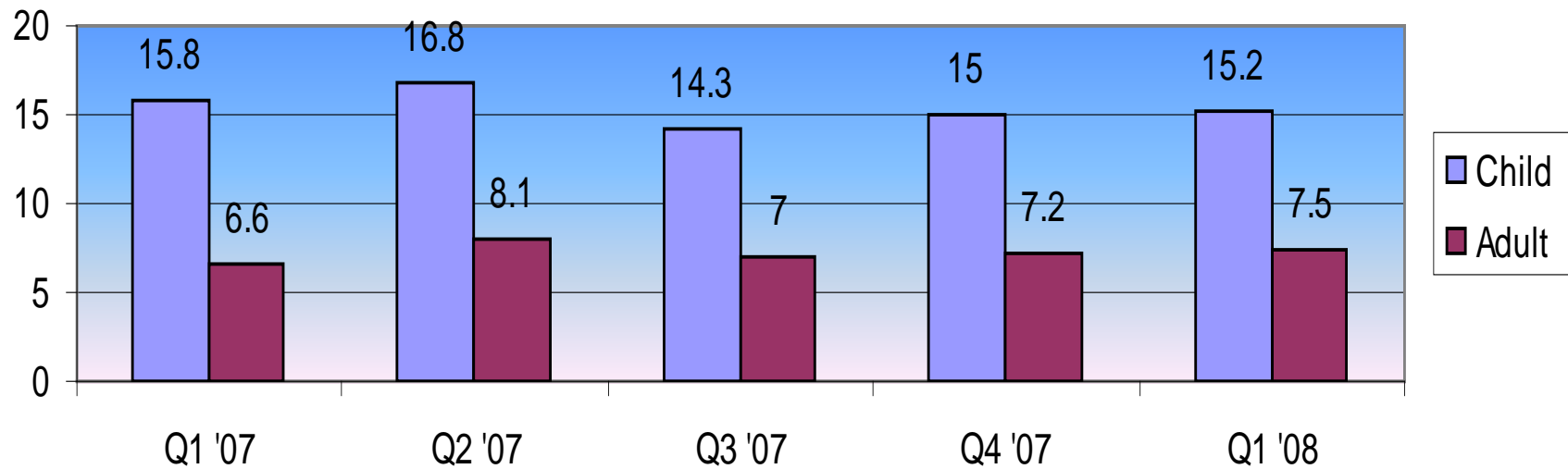
Inpatient Admits Per 1000 Adult vs. Child



Includes: Children 0-18, Adults 19+, IPF only

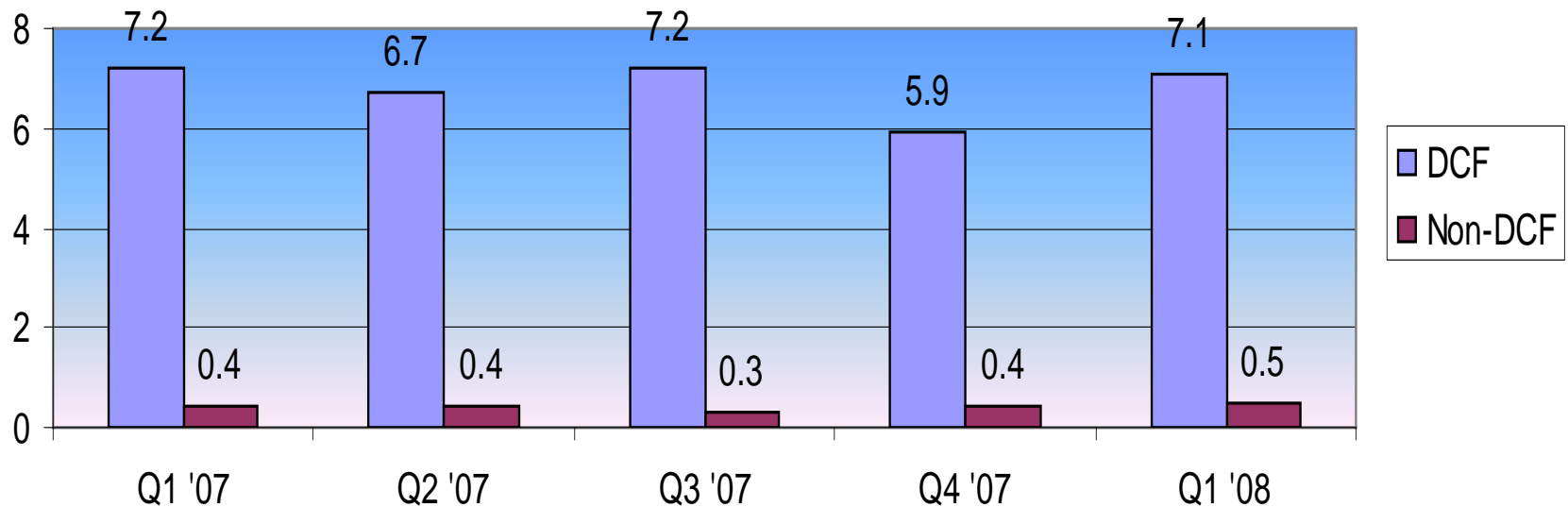
Excludes: Riverview

Inpatient Days Per 1000 Adult vs. Child



Includes: Adults 19+, Children 0-18, IPF only
Excludes: Riverview

Inpatient Admits Per 1000 DCF vs. Non DCF

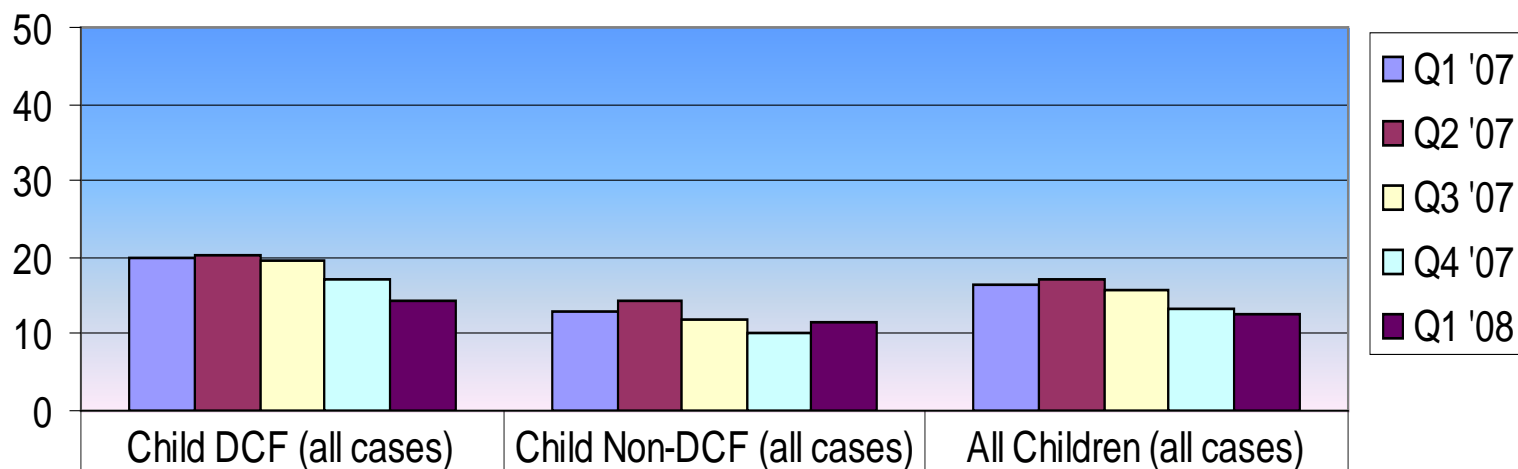


Includes: Children 0-18, IPF only

Excludes: Riverview

Inpatient Length of Stay and Delay Analysis

Average Acute Length of Stay

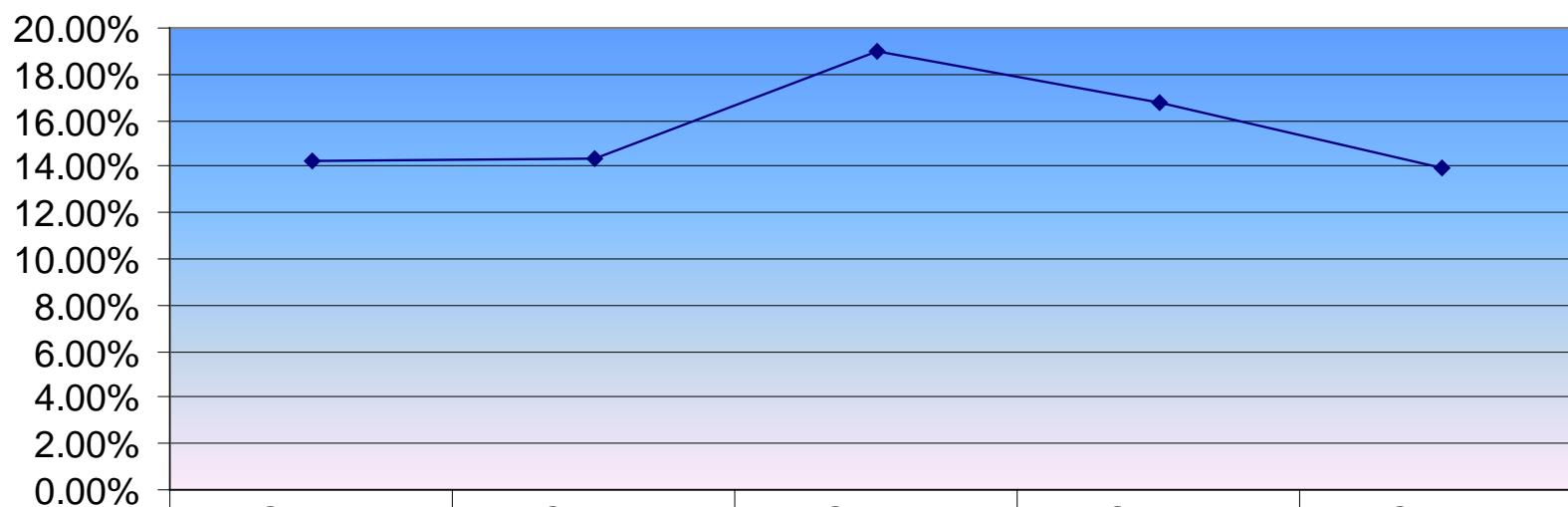


	Child DCF (all cases)	Child Non-DCF (all cases)	All Children (all cases)
Q1 '07	19.93	13.1	16.37
Q2 '07	20.42	14.48	17.23
Q3 '07	19.73	12.06	15.88
Q4 '07	17.07	10.14	13.3
Q1 '08	14.41	11.44	12.66

Includes: All cases discharged within the quarter

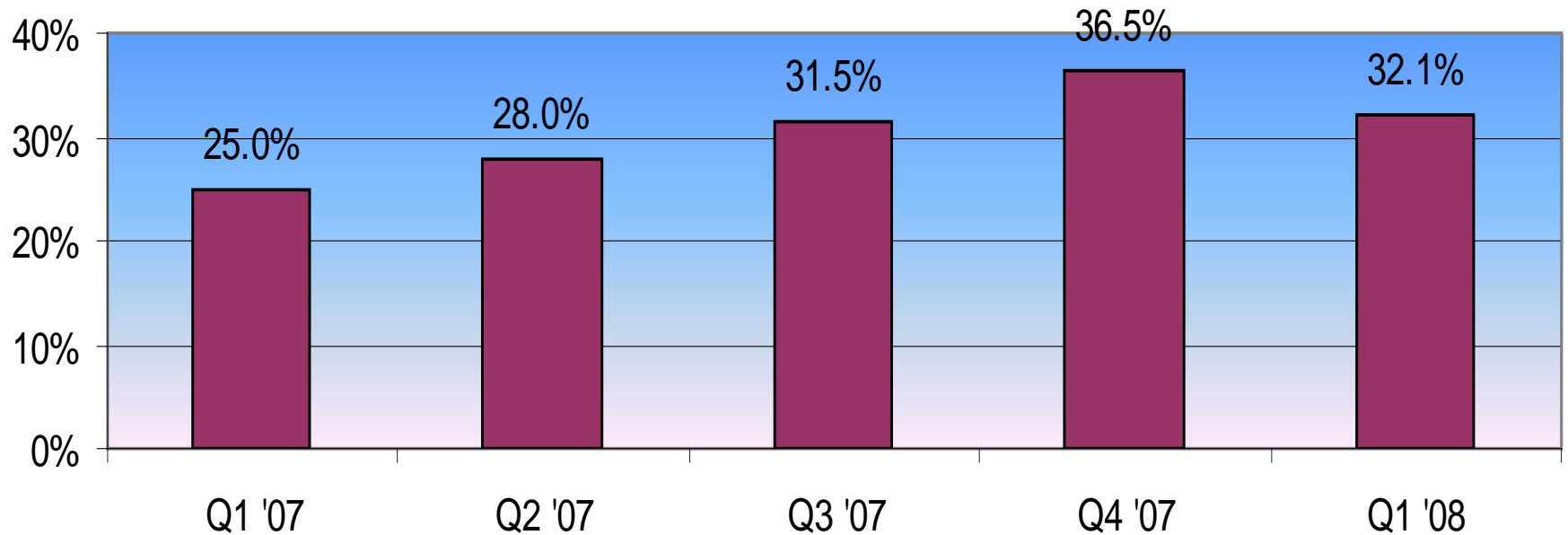
Excludes: Riverview

Child Psychiatric Inpatient Cases in Delay Status per Quarter, Excluding Riverview



Series1	Q1 '07	Q2 '07	Q3 '07	Q4 '07	Q1 '08
	14.20%	14.37%	18.94%	16.79%	13.90%

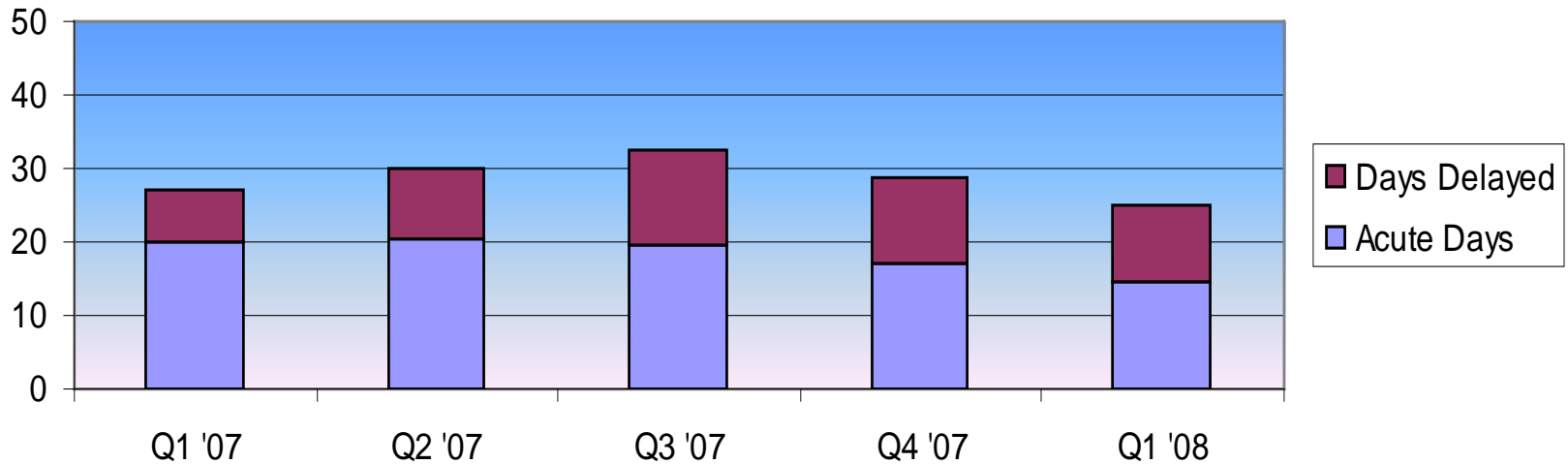
Percent of Inpatient Days in Delay Status



Includes: All cases discharged within the quarter or in care at the end of the quarter

Excludes: Riverview

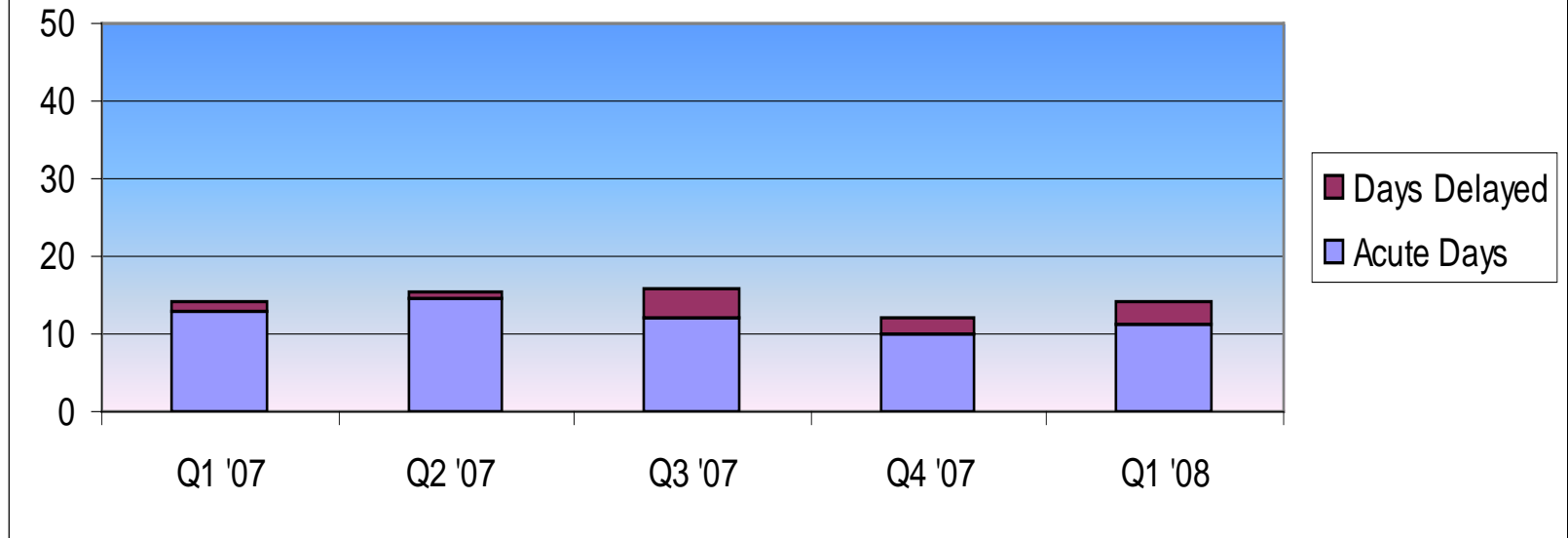
DCF: Average Length of Stay Acute and Discharge Delay



Includes: All DCF cases discharged within the quarter

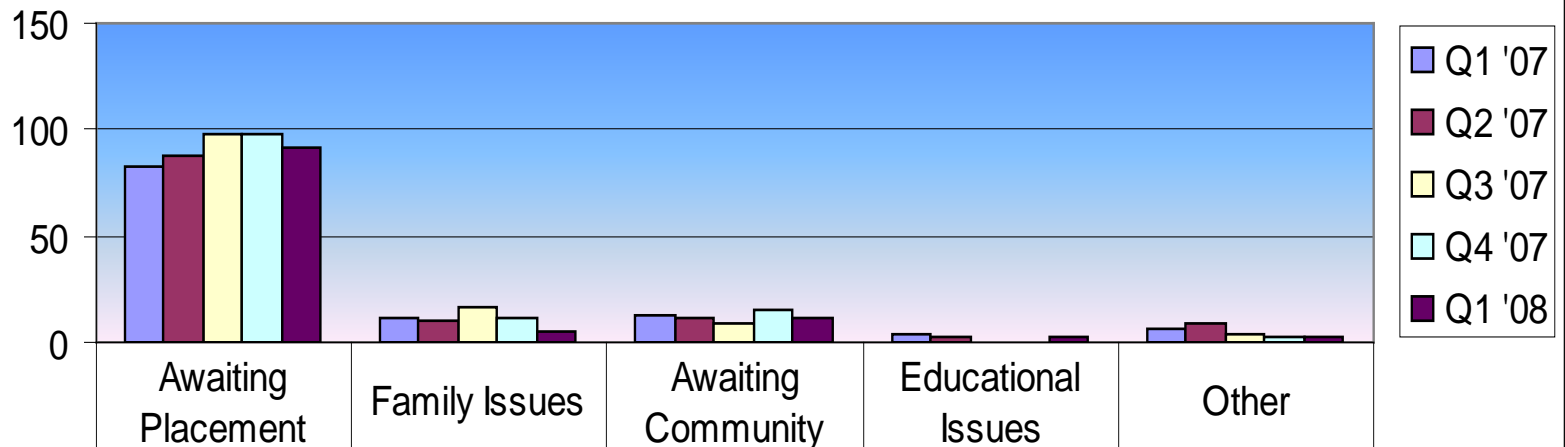
Excludes: Riverview

Non-DCF: Average Length of Stay Acute and Discharge Delay



Includes: All Non-DCF cases discharged within the quarter
Excludes: Riverview

Inpatient Delay Reason Codes by Major Category



Q1 '07	82	11	13	4	6
Q2 '07	88	10	11	2	9
Q3 '07	98	16	9	0	4
Q4 '07	98	11	15	0	3
Q1 '08	92	5	12	2	2

Includes: Discharges during the quarter or still in care at the end of the quarter

Excludes: Riverview

Questions?